

Research article

Open Access

The planetary biology of cytochrome P450 aromatases

Eric A Gaucher¹, Logan G Graddy², Tang Li¹, Rosalia CM Simmen³, Frank A Simmen³, David R Schreiber¹, David A Liberles⁴, Christine M Janis⁵ and Steven A Benner*⁶

Address: ¹Foundation for Applied Molecular Evolution, 1115 NW 4th Street, Gainesville FL 32601-4256, USA, ²Department of Psychiatry, Duke University Medical Center, Durham, NC 27708, USA, ³Department of Physiology & Biophysics, Medical Sciences & Children's Nutrition Center, University of Arkansas, 1120 Marshall Street, Little Rock AR, 72202, USA, ⁴Computational Biology Unit, Bergen Center for Computational Science, University of Bergen, 5020 Bergen, Norway, ⁵Ecology and Evolutionary Biology, Brown University, Providence RI 02912, USA and ⁶Department of Chemistry, University of Florida, Gainesville FL 32611-7200, USA

Email: Eric A Gaucher - gaucher@scinq.org; Logan G Graddy - gradd001@mc.duke.edu; Tang Li - tang@scinq.org; Rosalia CM Simmen - simmenrosalia@uams.edu; Frank A Simmen - simmenfranka@uams.edu; David R Schreiber - schreiber@scinq.org; David A Liberles - liberles@cbu.uib.no; Christine M Janis - Christine_Janis@brown.edu; Steven A Benner* - benner@chem.ufl.edu

* Corresponding author

Published: 17 August 2004

Received: 12 February 2004

BMC Biology 2004, 2:19 doi:10.1186/1741-7007-2-19

Accepted: 17 August 2004

This article is available from: <http://www.biomedcentral.com/1741-7007/2/19>

© 2004 Gaucher et al; licensee BioMed Central Ltd.

This is an open-access article distributed under the terms of the Creative Commons Attribution License (<http://creativecommons.org/licenses/by/2.0>), which permits unrestricted use, distribution, and reproduction in any medium, provided the original work is properly cited.

Abstract

Background: Joining a model for the molecular evolution of a protein family to the paleontological and geological records (geobiology), and then to the chemical structures of substrates, products, and protein folds, is emerging as a broad strategy for generating hypotheses concerning function in a post-genomic world. This strategy expands systems biology to a planetary context, necessary for a notion of fitness to underlie (as it must) any discussion of function within a biomolecular system.

Results: Here, we report an example of such an expansion, where tools from planetary biology were used to analyze three genes from the pig *Sus scrofa* that encode cytochrome P450 aromatases—enzymes that convert androgens into estrogens. The evolutionary history of the vertebrate aromatase gene family was reconstructed. Transition redundant exchange silent substitution metrics were used to interpolate dates for the divergence of family members, the paleontological record was consulted to identify changes in physiology that correlated in time with the change in molecular behavior, and new aromatase sequences from peccary were obtained. Metrics that detect changing function in proteins were then applied, including K_A/K_S values and those that exploit structural biology. These identified specific amino acid replacements that were associated with changing substrate and product specificity during the time of presumed adaptive change. The combined analysis suggests that aromatase paralogs arose in pigs as a result of selection for *Suoidae* with larger litters than their ancestors, and permitted the *Suoidae* to survive the global climatic trauma that began in the Eocene.

Conclusions: This combination of bioinformatics analysis, molecular evolution, paleontology, cladistics, global climatology, structural biology, and organic chemistry serves as a paradigm in planetary biology. As the geological, paleontological, and genomic records improve, this approach should become widely useful to make systems biology statements about high-level function for biomolecular systems.

Background

The emergence of complete genomes for many organisms, including humans, has created the need for hypotheses concerning the "function" of specific genes that encode specific proteins. While "function" is interpreted by different workers in different ways [1], Darwinian theory (by axiom) requires that the term be connected to fitness; natural selection is the only mechanism admitted by theory to generate functional behavior in a living system, macro or molecular. This, in turn, implies that the hypotheses about function have a "systems" component, including the interaction of the protein with other proteins, their impact on the physiology (defined broadly) of the cell and organism, and the consequences of physiology in a changing ecosystem in a planetary context [2].

Systems hypotheses can be supported by information from many areas. Geology, paleontology, and genomics, for example, provide three records that capture the natural history of past life on Earth. At the same time, structural biology, genetics, and organic chemistry describe the structures, behaviors and reactivities of proteins that allow them to support present life. It has been appreciated that a combination of these six types of analysis provides insights into functional behavior of proteins that cannot be provided by any of these alone [2]. Over the long term, we expect that the histories of the geosphere, the biosphere, and the geosphere will converge to give a coherent picture showing the relationship between life and the planet that supports it. This picture will be based, however, on individual cases that serve as paradigms for making the connection.

The aromatase family of proteins offers an interesting system to illustrate the power of this combination as a way to create hypotheses regarding protein function within a system [3]. These hypotheses are not "proof", of course, but are limiting in genomics-inspired biological experimentation, now that genomic data themselves are so abundant.

Aromatases are cytochrome P450-dependent enzymes that use dioxygen to catalyze a multistep transformation of an androgenic steroid (such as testosterone) to an estrogenic steroid (such as estradiol) (Figure 1). The protein plays a key role in normal vertebrate reproductive biology—a role that appears to have arisen before fish and tetrapods (land vertebrates, including mammals) diverged some 375 million years ago [4]. Aromatase is important in modern medicine as well, especially in breast and other hormone-dependent cancers [5].

Different numbers of aromatase genes are found in different vertebrates. Two aromatase genes are known in teleost fish [6,7]. Only a single gene is known in the horse [8], rat [9], and mouse [10]. Cattle have both a functional gene

and a pseudogene built from homologs of exons 2, 3, 5, 8, and 9 of their functional gene; these are interspersed with a bovine repeat element [11,12]. In several mammalian species, including humans and rabbits, a single gene yields multiple forms of the mRNA for aromatase in different tissues via alternative splicing [13-16].

A still different phenomenology is observed in the pig (*Sus scrofa*). Three different mRNA molecules had been reported in different tissues from pig [17-21]. Compelling evidence then emerged that the three variants of mRNA identified in cDNA studies arose from three paralogous genes [22], rather than from a single gene differentially spliced [23]. This implies that the three aromatase paralogs in pigs arose via gene duplications relatively recent in geologic time.

Hypotheses relating to the function of the three aromatase paralogs depend in part on when those duplications took place. If they were very recent, the three genes might have helped pigs adapt to domestication. If they pre-dated the divergence of pigs and fish [6], they may have different roles that are very fundamental to reproductive endocrinology in vertebrates. We apply here a series of tools to generate better hypotheses concerning the aromatase family of paralogs in swine.

Results

One strategy useful for understanding the function of genes correlates events in their molecular evolution with events occurring in the history of other genes in the same and/or neighboring lineages, and with events recorded in the geological and paleontological records [2]. We incorporated a tool to date the divergence of two or more genes through an analysis of transitions at synonymous sites of two-fold redundant coding systems, where the encoded amino acid has been conserved [24]. This analysis exploits the approach-to-equilibrium kinetic behavior displayed by these sites. The analysis yields a transition redundant exchange (TREx) distance for any gene pair where the synonymous sites have not equilibrated.

To calibrate the silent TREx clock, inter-taxa histograms relating pig (*Sus scrofa*) and ox (*Bos taurus*) were constructed for transitions at the silent sites of two-fold redundant codon systems where the encoded amino acid was conserved between the species [24]. The major peaks associated with the separation of these two lineages was observed at $f_2 = 0.87$, corresponding to a TREx distance of $kt = 0.332$. As the fossil record constrains the date of divergence of these two lineages to be 60 ± 5 Ma [25-27], and the codon biases in modern *Sus scrofa* and *Bos taurus* project an equilibrium value for $f_2 = 0.54$ [24], the rate constants for transitions at the TREx silent sites were

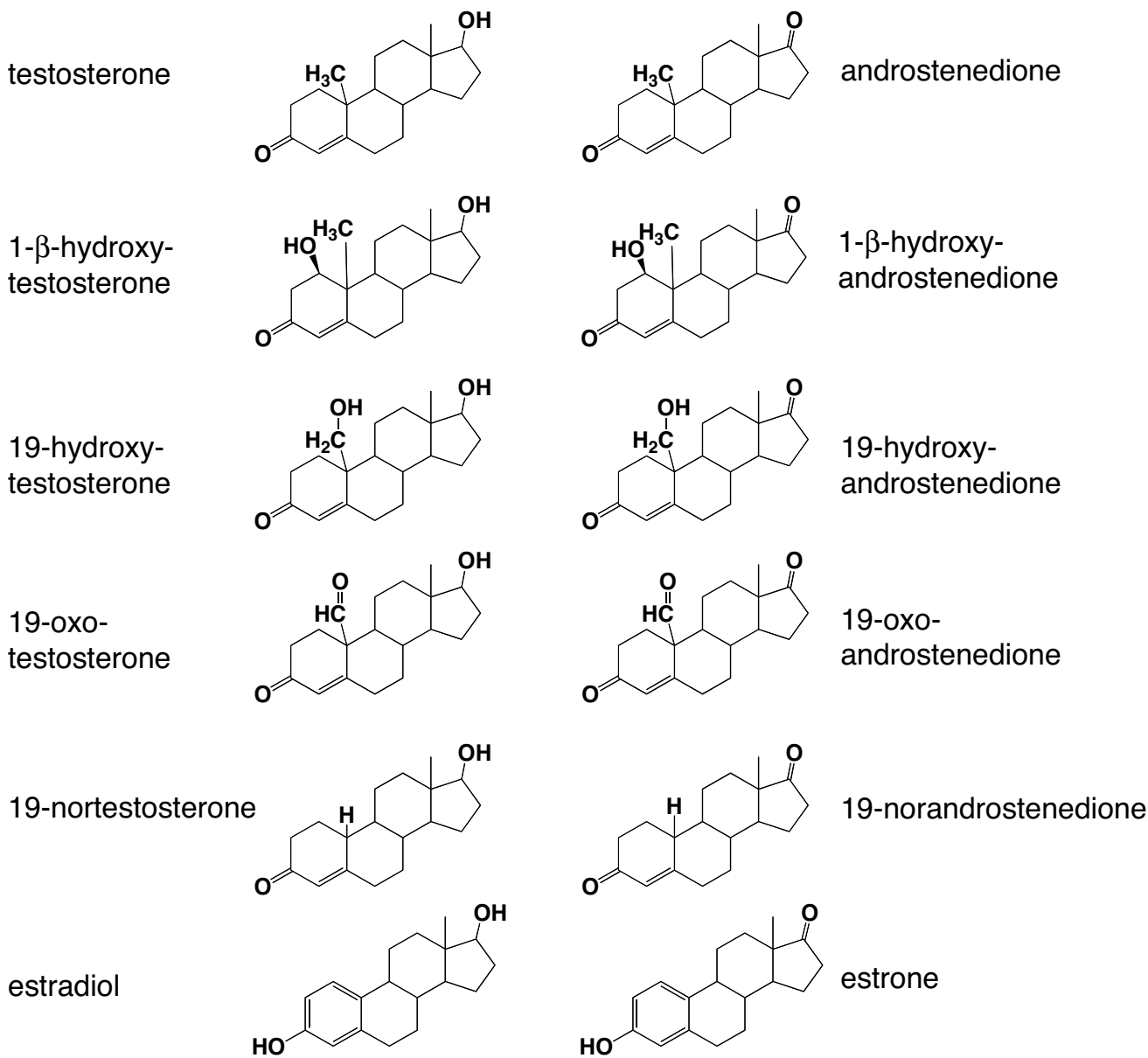


Figure 1
Reactions catalyzed by aromatases on multiple androgenic substrates.

estimated to be ca. 2.8×10^{-9} transitions/silent site/year during the time interval that separates these lineages.

Analogous f_2 values were then obtained for other vertebrate aromatase pairs, including fish *vs.* tetrapods ($f_2 = 0.56$), birds versus mammals ($f_2 = 0.612$), primates versus ungulates ($f_2 = 0.823$), and horses versus artiodactyls ($f_2 = 0.828$). Assuming a time-invariant single lineage first

order rate constant of 3.6×10^{-9} changes/site/year and an equilibrium f_2 of 0.54, the corresponding dates of divergence are calculated to be 435, 258, 67, and 65 Ma respectively, with the oldest dates being the least precise. The last three of these dates of divergence are similar to those suggested by the paleontological record [28], within the error of the calculation, which reflects the modest number of characters used to calculate the f_2 values. A tree for the

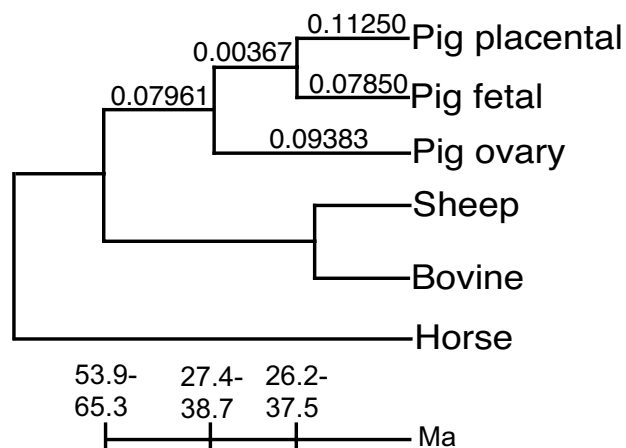


Figure 2

Dating the pig duplication events. An evolutionary tree, following the topology of Figure 5, showing estimated TREx distances for individual branches calculated from reconstructed ancestral sequences. The scale corresponds to evolutionary time (in million years) estimated from the TREx's using a first order rate constant for transitions of 3×10^{-9} changes per base per year.

artiodactyl lineage was constructed from the corresponding TREx distances (Figure 2). This was found to be consistent with the tree constructed from other metrics.

The TREx clock is not widely used. It may, however, provide more accurate dates in regions where synonymous transitions have not equilibrated than conventional clocks that combine data from synonymous transitions and synonymous transversions, or from non-synonymous changes. A comparison of different clocks will be provided in detail elsewhere (Benner *et al.*, in preparation). Briefly, the rate constants for transitions and transversions are more different than the two rate constants for purine-purine and pyrimidine-pyrimidine transitions. Further, nucleotide frequencies can be used to calibrate the end equilibrium points for two-fold redundant codon systems directly, and this permits an "approach to equilibrium" formalism, well known in chemical kinetics, to be applied [24,29-31].

From the tree, the TREx distances from the ancestor of fetal and placental aromatase to the modern enzymes are 0.113-0.079 (using an endpoint of 0.54 to reflect equilibration at the silent sites), corresponding to a range in the time of divergence of 26–38 Ma. The TREx distances from the divergence of all of the porcine aromatases and the modern forms ranges from 0.082–0.116, corresponding

to dates of divergence in the range of 27–39 Ma. This suggests that the three aromatase paralogs diverged in the late Eocene to mid Oligocene.

To further correlate the duplication of the genes with the fossil record, genomic DNA was analyzed from relatives of *Sus scrofa*. Both peccary and babirusa seminal plasma (*Tayassu pecari*, from the Center for Reproduction of Endangered Species, Zoological Society of San Diego; *Babryrousa babryrousa*, from the Bronx Zoo, New York) was probed by PCR (Polymerase Chain Reaction) amplification using exon 4-specific primers [32]. Bands having the sizes expected for the corresponding aromatases were observed by agarose gel electrophoresis. Based on sequence similarity, two isoforms of aromatase were obtained from both peccary and babirusa as clones derived from the PCR products (Figure 3). This establishes that at least one of the duplications occurred before the Tayassuidae (the peccaries) diverged from the Suidae (the true pigs) ca. 35 Ma [33,34].

These data are consistent with an evolutionary model that holds that the ancestor of pig and oxen (approximated in the fossil record by *Diacodexis*, from the early Eocene ca. 55 Ma) [35] contained a single aromatase gene, and that the paralogous genes in pig arose some 20 million years later. This suggests that the paralogs in pig can be explained neither in terms of the fundamentals of vertebrate reproductive endocrinology, nor as a consequence of swine domestication.

This does, however, suggest that the emergence of the aromatase paralogs was approximately contemporaneous with the emergence of a litter in the Suoidea larger than that found in the ancestral artiodactyl condition. While ruminant and camelid artiodactyls have only one-two young per litter, suoids in general have at least two young per litter (as seen in peccaries) and most suines (true pigs) routinely have three-four young (up to 12 in the domestic pig, *Sus*). Note that there has long been the tacit assumption that large litters in suoids represent the primitive artiodactyl condition. Large litters are primitive for mammals in general, and because suoids are plesiomorphic in some anatomical conditions relative to other artiodactyls (e.g., short legs, retention of four digits, bunodont cheek teeth), they have been assumed to be plesiomorphic in other respects.

Other data suggest that small litters are in fact the primitive artiodactyl condition. Tragulids (mouse deer or chevrotains) are surviving small, primitive ruminants that are not too dissimilar from *Diacodexis* in body form, but only have one-two young per litter. Additionally, fossil record data on pregnant oreodonts (an extinct group probably related to the ruminant/camelid artiodactyl lineage, but

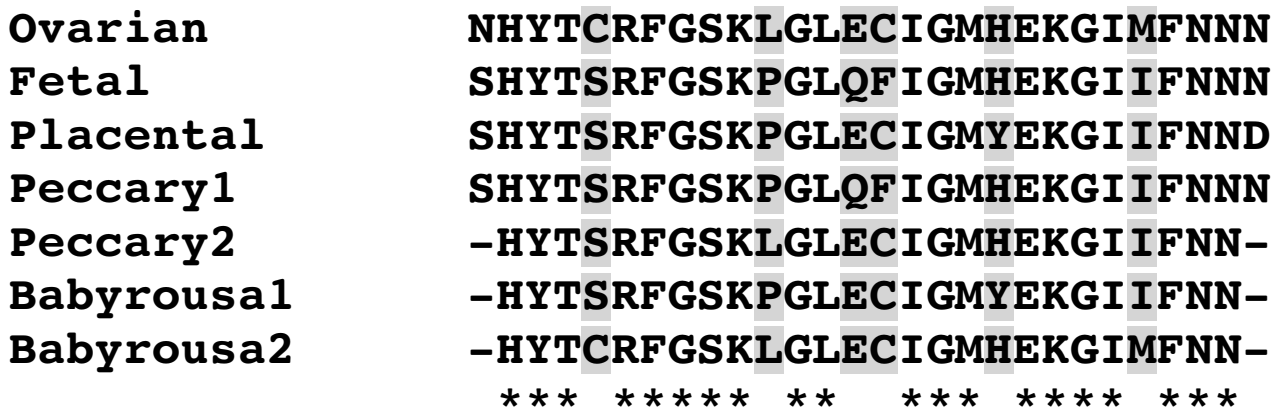


Figure 3
 The amino acid alignment of exon 4 of two aromatase isoforms from both peccary and babirusa sequences with exon 4 of pig aromatase isoforms ovarian, fetal, and placental. Asterisks represent conserved sites.

with a suoid-like plesiomorphic postcranial morphology) shows that they also only had one-two young [36,37]. A cladogram of the Artiodactyla (Figure 4) illustrates the probable acquisition of multiparous versus uniparous reproductive strategies, and places the character of litters with typically more than two members emerging just before the divergence of Tayassuidae and Suidae.

The approximate correlation in time of the aromatase divergence in Suoidea with the enlargement of litters in Suoidea suggests, as a hypothesis, that the two are functionally related. To expand on this hypothesis, we sought genomic signatures of functional change within the aromatase paralogs. The number of non-synonymous changes in the gene divided by the number of the synonymous changes, normalized for the number of non-synonymous and synonymous sites (the K_A/K_S value), strongly suggests functional change when the value is significantly greater than unity [38,39], and is also an indicator of hypothetical functional change when the value is high on a branch of a tree relative to other branches of the same tree [40-43]. K_A/K_S values were reconstructed for individual branches of the evolutionary tree derived from the Darwin bioinformatics workbench (see Methods) using a distance matrix and ancestral states constructed by the method of Messier and Stewart [39]. The typical branch in the aromatase evolutionary tree has a K_A/K_S value of 0.35. A higher K_A/K_S value of 0.85 is found in the episodes of evolution near when the pig aromatases diverged. While a K_A/K_S value of 0.85 does not require the conclusion that positive selection occurred during the emergence of these aromatase paralogs, an inference based on the magnitude of K_A/K_S in one branch, relative

to the K_A/K_S value for typical branches [40-43], suggests that adaptive changes occurred during the duplications of the aromatase genes in pigs.

A complete maximum likelihood analysis of the aromatase gene family was performed using the PAUP and PAML programs. The resulting tree, generated in PAUP, is shown in Figure 5, with parameters estimated using PAML. Once more, the generation of paralogs in the pig was found to have occurred after the divergence of pigs from oxen. A high K_A/K_S value (0.93) was again found in the divergence of the swine isoforms on the branch leading to the ancestor of the placental and embryonic enzymes following their divergence from the pig ovarian enzyme. The distribution of substitutions along this branch is consistent with altered functional constraints for the placental and embryonic enzymes compared with their extinct and extant counterparts (Tables 1 and 2) [44].

We correlated the episode of rapid sequence change during the emergence of the embryonic and placental paralogs with the structural biology of aromatase. A homology model of aromatase was built from progesterone 21-hydroxylase from rabbit liver (coordinates from PDB file 1DT6) [45], a homologous cytochrome P450-dependent monooxygenase. Residues undergoing replacement during the episodes represented by branches in Figure 5 (branches 1-3) are highlighted in color on the 3D model using a program in prototype with HyperChem (Figure 6).

Multiple features within the pattern of amino acid replacement were apparent. First, the sites accepting amino acid replacements in the branches with low K_A/K_S

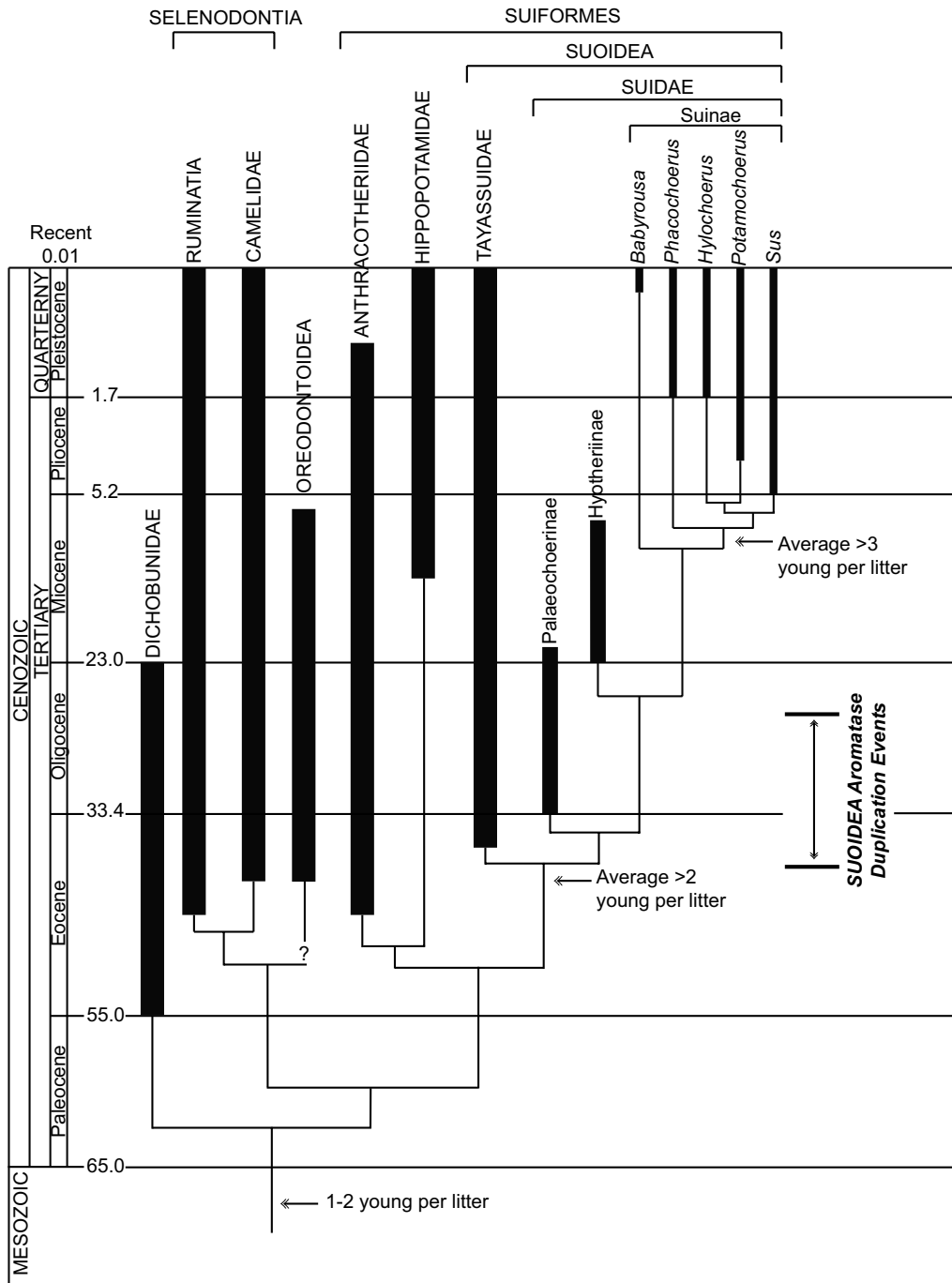


Figure 4

Cladogram of the order Artiodactyla showing the extant families and some selected extinct ones. Ruminantia includes the modern families Tragulidae, Giraffidae, Bovidae, Moschidae, and Cervidae, plus a number of extinct families. "Dichobunidae" is a paraphyletic assemblage of primitive taxa considered broadly ancestral to the later families. The interrelationships of the families reflect the "traditional" relationship based on morphology [85]. Different arrangements based on molecular information [86, 87] would alter the placement of the Camelidae and Hippopotamidae but would make no difference to the arguments presented here concerning the Suoidea. The interrelationships within the Suidae are based on information in several studies [32, 67, 88, 89]. Note that only a couple of extinct suid subfamilies are shown, and that only extant genera of Suinae are shown. Thick, medium-thick and thin lines represent family or above, subfamily and genera, respectively.

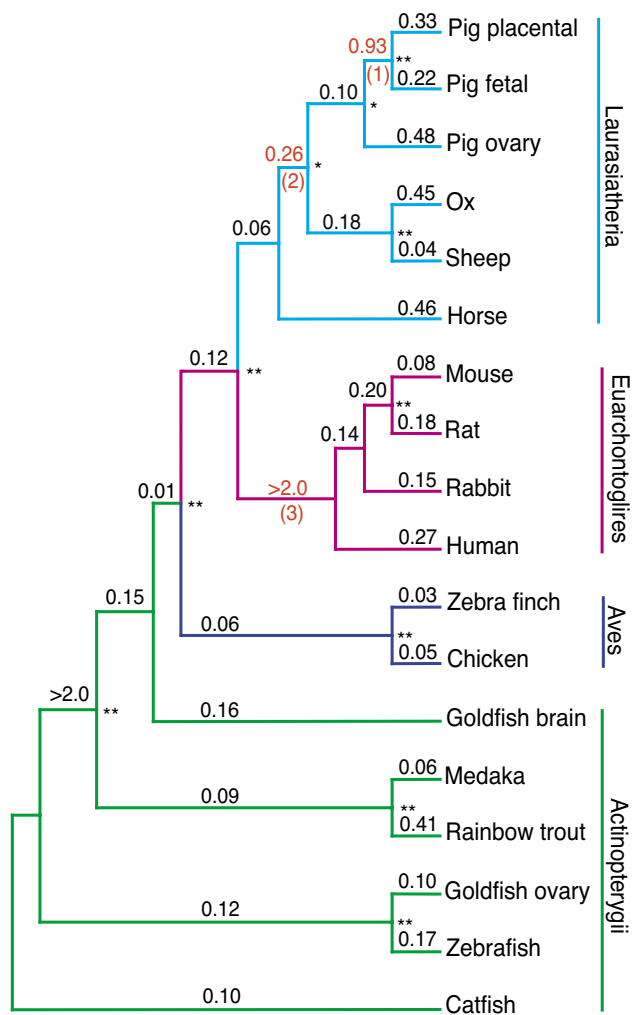


Figure 5
 Phylogenetic tree for the 18 vertebrate aromatase genes. Numbers above the branches represent the K_A/K_S ratios, while numbers below indicate branches highlighted in Figure 6. Single and double asterisks represent bootstrap values of 95–99% and 100%, respectively. The following sequences were used: *Tilapia nilotica* (rainbow trout), gi:1613859, *Oryzias latipes* (medaka), gi:1786171, *Danio rerio* (zebrafish), gi:2306966, *Carassius auratus* (goldfish, ovary), gi:2662330, *Ictalurus punctatus* (catfish), gi:912802, *Carassius auratus* (goldfish, brain), gi:2662328, *Sus scrofa* (pig) placental, isoform 2, gi:1762232, *Sus scrofa* (pig) embryo, isoform 3, gi:1244543, *Sus scrofa* (pig) ovary, isoform 1, gi:1928957, *Bos taurus* (ox), gi:665546, *Equus caballus* (horse), gi:2921277, *Mus musculus* (mouse), gi:3046857, *Rattus norvegicus* (rat), gi:203804, *Oryctolagus cuniculus* (rabbit), gi:2493381, *Homo sapiens* (human), gi:28846, *Gallus gallus* (chicken), gi:211703, *Poephila guttata* (zebra finch, ovary), gi:926845, *Ovis aries* (sheep), gi:7673985.

values (as represented by branch 2 in Figure 5) were typically scattered without any obvious pattern over the surface of the protein. This is expected for neutral drift, although an adaptive role for these replacements is not excluded by this analysis.

In contrast, the distribution of sites accepting amino acid replacements during the episode of rapid sequence evolution of branch 1 (as indicated by a relatively high K_A/K_S value) involving pig paralogs was not random over the protein surface. Rather, the sites are clustered near the substrate binding pocket, and in a region of the surface believed to contact the co-reductant protein, as identified by mutagenesis experiments in the homolog [46,47].

The clustering of amino acid replacements near a substrate binding site during an episode of rapid sequence evolution suggests that the substrate specificity of the protein might be changing in correlation with a change in the detailed physiological role of the protein. Recent reports suggest that the substrate and product specificities of the placental and embryonic enzymes are indeed different from those of the ovarian enzyme [23,48-50]. Further, synthesis of estrogen by the ovarian enzyme is more dependent on the structure of the co-reductant than is the placental enzyme [51]. Our *in silico* analyses rationalize these experimental observations from a structural perspective. The coupling of an evolutionary analysis to a crystallographic analysis suggests that the amino acid changes are functionally significant.

Discussion

Today, natural history holds some of the most intellectually challenging conundrums to ever fascinate the human mind. Further, natural history offers biological chemists the opportunity to place broad biological meaning on the detailed analysis of the structure reactivity of isolated biological molecules studied in a reductionist setting. To do so, however, natural history must be connected to the physical and molecular sciences, both in subject matter and in culture.

In part to make this connection, natural historians have sought to change the research paradigm in their field to favor quantitative data directed towards the "proof" of hypotheses over "story telling". Proving hypotheses is difficult in natural history (*pace* the philosophical reality that no significant statement in empirical science can ever be said to be "proven"). The events of interest (such as the extinction of dinosaurs) are frequently distant in time, or require a passing of time (as for speciation), making them difficult to reproduce in a laboratory. The scale of the concepts involved (species, environments, planets) also does not lend these concepts to laboratory models and laboratory-controlled tests. Further, a reductionist approach,

Table 1: Frequency distributions of stem pig duplication substitutions versus substitutions on all other terrestrial vertebrate branches

Terrestrial vertebrates	Non-synonymous substitutions	Synonymous substitutions	Totals
Stem pig duplicates (Branch 'I' in Figure 5)	23	9	32
Remaining branches	598	1449	2047
Totals	621	1458	2079

Fisher's exact test, $P = 0.00000094784$ [44].

Table 2: Frequency distributions of stem pig duplication substitutions versus substitutions within the Laurasiatheria subtree

Laurasiatheria subtree	Non-synonymous substitutions	Synonymous substitutions	Totals
Stem pig duplicates (Branch 'I' in Figure 5)	23	9	32
Remaining branches	232	258	490
Totals	255	267	522

Fisher's exact test, $P = 0.0056688$ [44].

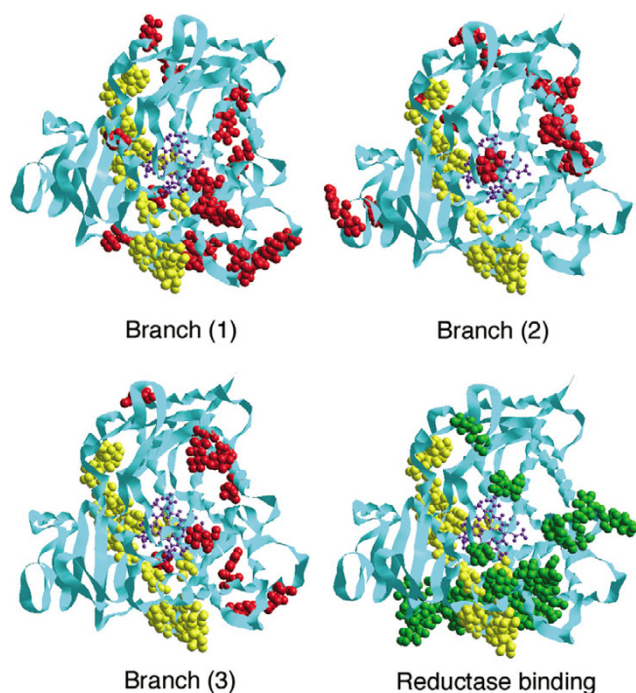


Figure 6
The distribution of amino acid replacements on the tertiary structure of cytochrome P450 homolog. Amino acid replacements occurring along branches highlighted in Figure 5 are shown in red. The substrate binding pocket and nicotinamide co-factor are colored yellow and purple, respectively. The sites that bind the co-reductant are highlighted in green for reference.

even when available, will not necessarily generate data that are relevant to the big issue that concerns the natural historian. The emphasis on data and proof has ameliorated the worst excesses of storytelling in natural history, with enormous positive impact.

Just as natural historians were purifying their field of storytelling, however, whole genome sequences began to emerge. By dramatically increasing the quantity of chemical data concerning the molecular structures of proteins, genomics changed the limiting steps in biochemical and biomedical research. No longer was the typical researcher attempting to solve an organic chemical or biotechnological question (What is the sequence of my protein? How do I express it at high levels to get the sequence?) for a protein that had been selected for functional reasons. Today, the typical researcher knows the structure of many proteins, and wishes to select one for expression and study based on a hypothesis about its potential function.

Here, the fact that any definition of function, which must make reference to fitness, requires some systems, ecological, or planetary context, makes the natural historian a natural source of hypotheses. Their full reductionist armamentarium is available in the laboratory to test and explore any hypothesis that the natural historian might provide. The biomedical researchers may like some guidance from the natural historian to narrow the broad selection, or to shorten the random walk, if only slightly.

For this purpose, the forswearing by natural historians of storytelling has come at a most inopportune time. To the

modern natural historian, creating hypothesis can easily be regarded as "storytelling". They are reluctant to do so, and may criticize as atavistic colleagues who do.

This has created a vacuum in the scientific community. Very few laboratories exist that can draw upon an expertise in natural history to generate stories that create hypotheses for the researcher working in experimental biochemistry and molecular biology.

This article is designed in part to illustrate how this vacuum might be filled. Here, we do not just tell a story based on natural history, or even a story based on natural history supplemented with physiology and molecular sequence data. Rather, we show how the addition of other data, including data from X-ray crystallography, can make a story sufficiently rich that it can be viewed as being internally consistent with a wide range of independent data drawn from independent sources. This creates a hypothesis that is more than a story, even if it is less than proven.

With aromatase, the congruence of our different analyses makes a compelling suggestion that the three aromatase paralogs in pigs arose by two duplication events in the late Eocene or early Oligocene. The emergence of the aromatase paralogs corresponded approximately in time to the emergence of larger litter size in suines. This implies that the two duplication events are functionally related to the larger litter sizes. This inference is consistent with the physiological impact of estrogen synthesis by these paralogs in *Sus*. Steroid production by the porcine embryo is tightly controlled by the transient expression of aromatase and 17-hydroxylase (P450C17) between days 10 and 13 [20,21,52]. In contrast, estrogen synthesis by the equine embryo begins as early as day 6 and increases with embryo age and diameter [52]. The estrogen produced by the pig embryonic aromatase is believed to have an impact on the mobility, spacing, and implantation of the concepti [52-56]. Adequate spacing would appear to be required to manage a larger litter.

This is consistent with a structural biological analysis that correlates specific amino acid replacements with specific changes in the substrate and product specificity of the protein [57]. Interestingly, the substrate specificity of human aromatase is reported to be more similar to that displayed by the pig placental enzyme than the ovarian form [48,49]. This is an unexpected similarity given that our evolutionary analysis suggests a change in biochemical function along the fetal/placental branch in the Suidae.

It should be noted that the hypothesis is supported by the combination of data that individually would not have strength past storytelling. Thus, the K_A/K_S ratio of 0.93 would not, by itself, compel any particular interpretation.

Its implications are greater given the relatively low K_A/K_S ratios of other branches of the tree. But the addition of crystallographic information, itself not compelling, makes a combination that is more compelling.

Further, this hypothesis generation itself generates discoveries that might lead to their own hypotheses. An analysis of the evolutionary branches separating pigs and humans suggests an additional episode of adaptive change. The branch leading to the ancestor of human aromatase (branch 3) has a remarkably high K_A/K_S ratio (13 non-synonymous and no synonymous changes; Figure 5). This is a K_A/K_S ratio greater than unity, and does (pending evaluation of its statistical significance) compel the inference of an episode of adaptive change. Intriguingly, these changes are also clustered in the same regions of the structure as those changing along branch 1 leading to the stem fetal/placental enzyme, near the substrate and co-reductant binding sites. This implies that the substrate/product specificity of the ancestral aromatase protein was not like that of either the human or the pig placental forms, but rather reflects features that arose convergently in these two species [58].

Notably, four of the sites (positions 47, 153, 219, 269) that undergo replacement during the emergence of pig placental aromatase from the last common ancestor are the same as four that arose in the emergence of the human aromatase from its last common ancestor. Of these, the amino acid replacements are identical at two sites (Thr → Met at site 153; His → Arg at site 269). The probability associated with randomly observing this pattern is extremely low (0.000021) [59]. An additional site is displaced by a single position in the sequence alignment (259/260). We hypothesize that these represent an example of adaptive parallel evolution.

It is important to point out that even an analysis this broad is likely to cover only a small part of a complicated reproductive endocrinology that must be associated with larger litter sizes. For example, the exact nature of the products produced by individual aromatases remains controversial, and may be different in laboratory studies depending on the conditions where they are studied [50,60-62]. This is especially the case with the 19-nortestosterone derivatives in Figure 1.

Further, an elegant recent study by Corbin *et al.* [23] identified 1 β -hydroxytestosterone as a novel product produced by recombinant pig ovarian aromatase that is absent from the products produced by the porcine placental paralog, or by either human or bovine aromatase. This testosterone derivative binds to an androgen receptor, consistent with physiological activity. This was unknown before just this year, suggesting that more endocrine nov-

elties remain to be discovered. Any of these may be relevant to a test of this system. For example, these hypotheses make predictions about the product specificities of the two peccary aromatases reported here.

In fact, some data suggest that uterine exposure to androgens severely decreases litter size and embryonic survival during the time of maternal recognition of pregnancy [63]. This is consistent with the hypothesis of Corbin *et al.* [50] that the evolution of the placental paralog is associated with increased efficiency of testosterone aromatization. This is also consistent with the current data, and the argument presented here.

It goes without saying that still more factors might be associated with an increase in litter size from one-two (presumed in *Diacodexis*, see Figure 4) to 12 or more in domestic swine. Most trivially, this increase might be associated with an increase in ovulation rate, and/or an adjustment in the structures and binding specificities of estrogen receptors [64].

Nevertheless, the first aromatase duplication, shared by pigs and peccaries, appears to have happened in the late Eocene (recognizing the error associated with these dates), around 35 Ma (Figure 4). This was a time of great global change, with dramatic cooling in the higher latitudes. More archaic kinds of mammals (e.g., some earlier families of perissodactyls and artiodactyls) became extinct, while many modern families (including the Suidae and Tayassuidae) became established at this time [65]. Suoids differed from other contemporaneous ungulates in their commitment to omnivory, even though a few forms, such as the modern warthog *Phacochoerus aethiopicus*, are more specialized herbivores. Perhaps the ability to bear a slightly larger litter than other artiodactyls was advantageous to them in this time of global ecological transition. However, it should be noted that larger litters usually mean altricial (i.e., relatively underdeveloped) young, a reproductive strategy apparently not available to larger, cursorial (running-adapted) ungulates, which give birth to precocial (i.e., well developed) young that are fully locomotory at birth [66].

The second aromatase duplication, with the ensuing capacity to produce multiple young, probably occurred within the family Suidae, some time during the Oligocene. The molecular data suggest dates of divergence between porcine fetal and placental aromatases as between 27–38 Ma, and the earliest known suid is of early Oligocene age [67], around 33 Ma (Figure 4). Large litters may have characterized the entire suid family. While the extant subfamily Suinae is primarily a Plio-Pleistocene radiation, during the Oligocene to Pliocene suids were exceedingly diverse taxonomically (with six other sub-

families known) as well as individually abundant as fossils [32,33,67]. In contrast, the predominantly North American tayassuids were never as diverse. It is possible that this tremendous Old-World diversity of suids, which continues to this day, is related to their capacity for the production of large litters.

This type of speculation opens questions. For example, the babirusa (an Indonesian pig) is reported to have average litters of one-two individuals [68,69]. While it is possible that litters contain three-four individuals, the occurrence is low [70]. If the common ancestor of babirusa with the African/Eurasian Suinae had a larger litter, then the babirusa must be hypothesized to represent a reversion to the more primitive condition. At present, however, relatively little is known of either the molecular biology or the natural history of babirusa. The date of divergence from modern swine is placed between 12–26 million years [71,72], while our TREx analysis using cytochrome *b* places this data at ca. 18 Ma (data not shown). Clearly, further study is warranted.

Conclusions

The aromatase family offers an example where a combination of phylogenetic analysis, molecular evolutionary analysis, and chemical analysis set within the context of the paleontological and geological records, and supported by contemporary bioinformatics and molecular modeling tools, permits a higher order level of hypothesis generation concerning the function of proteins. Rather than simply an Enzyme Commission number (E.C. 1.14.14.1 for aromatase), a description of catalytic activity (the enzyme oxidizes testosterone), or a description of the regulatory pattern (the protein expressed between day 10 and 13), this type of analysis can generate a truly functional hypothesis: that the embryonic enzyme oxidizes testosterone as a way of managing the larger litter sizes that emerged in the Suoidea during a time of dramatic planetary cooling (ca. 35 Ma).

Such hypotheses set a higher bar, and a more useful standard, for the field of systems biology. Evolutionary theory holds that the only mechanism for obtaining functional behavior in a biological system is natural selection. Selection, based on a frequently poorly defined concept of "fitness", is determined by a context that not only includes the cell and tissue, but also the organism, the ecosystem, and a changing planet [73]. One cannot expect a collection of expression data with a mathematical model, by themselves, to provide this type of functional information unless it is set in the organismic, ecosystem, and planetary context. The historical view, of the type outlined here, becomes a critical tool for constructing this setting (Supplementary Figure [see Additional File 1]).

Humans have evidently exploited the molecular biology of larger litters to select for pigs that have truly large litters (as many as 14) following their domestication. Evidence for ancient domestication of pigs comes, *inter alia*, from a study of Indo-European languages. Proto-Indo-European (PIE) language had words for "pig" (PIE *su-*, compared with Tocharian B *suwo*, Latin *sus*, Greek *us*, Sanskrit *sukara*, Church Slavic *svinija*, Old High German *swin*, and English *sow*; also compare PIE *porko-*, with Latin *porcus*, Church Slavic *prase*, Old High German *farah*, etc. [74]), indicating that the pig has been under human domestication for at least 6000 years, enough time to have suffered a significant impact on its genotype through husbandry. We are unable, at this time, to exploit complete genome sequences of pigs or other closely related taxa to discuss the impact of domestication on aromatase, steroid receptors, amphiregulins, or other proteins that appear to be associated with uterine capacity and large litter sizes in the domesticated pig [75]. With the anticipated complete genome sequences of representatives of various mammal orders, including artiodactyls, it should be possible to extend this planetary biology approach.

Methods

Calculations were done under the RedHat Linux 6.3 operating system on an Intel-Pentium III instrument using Blackdown's Java-SDK 1.1.8. PAML calculations were done on an IBM PC using the Unix operating system. Sequence analyses were aided by the DARWIN bioinformatics package [76]. The DARWIN package can be obtained by emailing a request to cbrg@inf.ethz.ch.

Initially, pairwise alignments were constructed for the aromatase protein sequences available in the database. An evolutionary distance in PAM units was calculated for each pair by applying the PamEstimator-package from DARWIN using an empirical log-odds matrix. From this, a preliminary evolutionary tree was built for the mammalian sequences, with branch lengths along internal nodes calculated to minimize a least-squares distance. The sequences of the ancestral genes and proteins at branch points in the tree were then reconstructed. From there, mutations (including fractional mutations) at both the DNA level and protein level were assigned to individual branches in the tree using the method of Fitch [77].

The evolutionary history of the aromatase family was then analyzed using the transition redundant exchange (TREx) metric based on an analysis of two-fold redundant codon systems [24,78]. These were obtained for each pairwise comparison of aligned aromatase genes. The number (n) of two-fold redundant amino acids (Cys, Asp, Glu, Phe, His, Lys, Asn, Gln, and Tyr) that are conserved in the aligned pairs was determined. The number of those amino acids that are encoded by the same codon (c) was

determined, and the fraction ($f_2 = c/n$) of the codons that are the same were then tabulated (Supplementary Table [see Additional File 2]). The TREx distances were calculated from f_2 values using the expression $kt = -\ln((f_2 - E_{\text{quill}})/(1 - E_{\text{quill}}))$, where E_{quill} is the f_2 value expected after a large number of nucleotide substitutions have occurred at the synonymous sites [24].

The DNA sequences for aromatase were phylogenetically analyzed using a maximum likelihood framework in PAUP 4.0* (beta 10) [79], with the following parameters: alpha value representing the gamma distribution (2.1), the transition-transversion ratio (1.6), proportion of invariable sites (0.24), and empirical base frequencies. The resulting topology of the tree mirrors those based on other molecular studies [80].

For inter-taxon analyses, families in the MasterCatalog (EraGen Biosciences, Madison WI) were identified that contained at least one representative protein from both of the taxa of interest. For these families, all inter-taxon pairs of genes were extracted, together with the pairwise protein sequence alignment. A pairwise alignment of the DNA sequences was then generated to follow the protein sequence alignment. If a family contained more than one sequence of a species belonging to one of the taxa analyzed, then those sequences were checked to determine whether they were duplicate entries into the database. If this was the case, only one of the duplicate sequences was retained in the analysis. A histogram of inter-taxon pairs was constructed, and the f_2 value characteristic of orthologs determined [24]. This was used to calibrate the TREx clock using the divergence of pigs and oxen, and pigs and humans.

Codon biases were obtained from the CUTG (Codon Usage Tabulated from GenBank) made available by the Kazusa DNA Research Institute Foundation, Japan [81].

Pairwise TREx distances were used to generate lengths for the branches connecting the swine paralogs using the minimum evolution criterion in PAUP. This preliminary analysis was followed by a maximum likelihood analysis for the complete dataset using the PAML program [82]. This includes the assignment of K_A/K_S values to individual branches. Tests of parallel evolution were conducted using Converge [59], implementing the JTT model.

Secondary structural data based on homology modeling for aromatases were generated using the DARWIN bioinformatics package, and in agreement with previous studies [83,84]. Renderings of the three dimensional structure of the proteins were obtained using a beta version of the HyperProtein package (HyperCube, Gainesville FL, USA 32601).

Authors' contributions

EAG performed the evolutionary, statistical and structural analyses, and prepared the manuscript. LGG cloned genes as part of his Masters work, and called the evolutionary problem to the attention of SAB. TL provided computational infrastructure. RCMS and FAS initiated the work with suid reproductive endocrinology, and supervised LGG. DRS and DAL did the initial bioinformatics analysis. CMJ provided paleontological expertise, constructed the cladogram, and helped prepare the manuscript. SAB has developed planetary biological analysis as a paradigm for generating hypotheses about the biological function of proteins, and prepared the manuscript.

Additional material

Additional File 1

Illustration of planetary biology. This figure illustrates the concepts of planetary biology as they relate to combining genomic, paleontological, chemical and ecological records to understand the history of the biosphere.

Click here for file

[<http://www.biomedcentral.com/content/supplementary/1741-7007-2-19-S1.jpeg>]

Additional File 2

An analysis of silent nucleotide substitutions in vertebrate aromatases. The first five columns from the left indicate the index number of sequence 1 compared with sequence 2, the fraction of sites at conserved two-fold redundant coding systems that are identical (f2), the number of such sites that are conserved (c2), and the number of such sites overall (n2). The remaining columns report analogous data: for silent sites in codon systems where a change at the third nucleotide is silent only if the change is a pyrimidine-pyrimidine transition (f2y, c2y, n2y); in silent sites where a change at the third nucleotide is silent only if the change is a purine-purine transition (f2r, c2r, n2r); for the silent sites at three-fold redundant codon systems (f3, c3, n3); and for the silent sites at four-fold redundant codon systems (f4, c4, n4).

Click here for file

[<http://www.biomedcentral.com/content/supplementary/1741-7007-2-19-S2.pdf>]

Acknowledgements

We thank three anonymous reviewers for their invaluable comments. We also thank Alaric Falcon, Andres A. Kowalski and Ge Zhao for their assistance. This work was supported in part by N.I.H. grants GM 54075 and GM 067439-01 (S.A.B.), N.I.H. grant HD 21961 (R.C.M.S., F.A.S.) and USDA-NRRCGP grant 98-35205-6739 (F.A.S., R.C.M.S.).

References

- Bork P, Dandekar T, Diaz-Lazcoz Y, Eisenhaber F, Huynen M, Yuan Y: **Predicting function: from genes to genomes and back.** *J Mol Biol* 1998, **283**:707-725.
- Benner SA, Caraco MD, Thomson JM, Gaucher EA: **Planetary biology. Paleontological, geological, and molecular histories of life.** *Science* 2002, **293**:864-868.
- Conley A, Hinshelwood M: **Mammalian aromatases.** *Reproduction* 2001, **121**:685-695.
- Callard GV, Pudney JA, Kendall SL, Reinboth R: **In vitro conversion of androgen to estrogen in Amphioxus gonadal tissues.** *Gen Comp Endocrinol* 1984, **56**:53-58.
- Wolff AC: **Systemic therapy.** *Current Opin Oncol* 2002, **14**:600-608.
- Callard GV, Tchoudakova A: **Evolutionary and functional significance of two CYP19 genes differentially expressed in brain and ovary of goldfish.** *J Steroid Biochem Mol Biol* 1997, **61**:387-392.
- Chang XT, Kobayashi T, Kajiuira H, Nakamura M, Nagahama Y: **Isolation and characterization of the cDNA encoding the tilapia (*Oreochromis niloticus*) cytochrome P450 aromatase (P450arom), Changes in P450arom mRNA, protein and enzyme activity in ovarian follicles during oogenesis.** *J Mol Endocrinol* 1997, **18**:57-66.
- Boerboom D, Kerban A, Sirois J: **Molecular characterization of the equine cytochrome P450 aromatase cDNA and its regulation in preovulatory follicles.** *Biol Reprod* 1997, **56**(Suppl 1):479.
- Hickey GJ, Krasnow JS, Beattie WG, Richards JS: **Aromatase cytochrome P450 in rat ovarian granulosa cells before and after luteinization. Adenosine 3',5'-monophosphate-dependent and independent regulation. Cloning and sequencing of rat aromatase cDNA and 5' genomic DNA.** *Mol Endocrinol* 1990, **4**:3-12.
- Terashima M, Toda K, Kawamoto T, Kuribayashi I, Ogawa Y, Maeda T, Shizuta Y: **Isolation of a full-length cDNA encoding mouse aromatase P450.** *Arch Biochem Biophys* 1991, **285**:231-237.
- Fürbass R, Vanselow J: **An aromatase pseudogene is transcribed in the bovine placenta.** *Gene* 1995, **154**:287-291.
- Hinshelwood MM, Corbin CJ, Tsang PC, Simpson ER: **Isolation and characterization of a complementary deoxyribonucleic acid insert encoding bovine aromatase cytochrome P450.** *Endocrinology* 1993, **133**:1971-1977.
- Harada N: **Cloning of a complete cDNA encoding human aromatase, immunochemical identification and sequence analysis.** *Biochem Biophys Res Comm* 1988, **156**:725-732.
- Delarue B, Mitre H, Feral C, Benhaim A, Leymarie P: **Rapid sequencing of rabbit aromatase cDNA using RACE PCR.** *Comptes Rend L'Acad Sci Serie III Sciences De La Vie-Life Sciences* 1996, **319**:663-670.
- Simpson ER, Michael MD, Agarwal VR, Hinshelwood MM, Bulun SE, Zhao Y: **Expression of the CYP19 (aromatase) gene. An unusual case of alternative promoter usage.** *FASEB J* 1997, **11**:29-36.
- Delarue B, Breard E, Mitre H, Leymarie P: **Expression of two aromatase cDNAs in various rabbit tissues.** *J Steroid Biochem Mol Biol* 1998, **64**:113-119.
- Corbin CJ, Khalil MW, Conley AJ: **Functional ovarian and placental isoforms of porcine aromatase.** *Mol Cell Endocrinol* 1995, **113**:29-37.
- Conley A, Corbin J, Smith T, Hinshelwood M, Liu Z, Simpson E: **Porcine aromatases, studies on tissue-specific functionally distinct isozymes from a single gene?** *J Steroid Biochem Mol Biol* 1997, **61**:407-413.
- Choi I, Simmen RCM, Simmen FA: **Molecular cloning of cytochrome P450 aromatase complementary deoxyribonucleic acid from peri-implantation porcine and equine blastocysts identifies multiple novel 5'-untranslated exons expressed in embryos, endometrium, and placenta.** *Endocrinol* 1996, **137**:1457-1467.
- Choi I, Collante WR, Simmen RCM, Simmen FA: **A developmental switch in expression from blastocyst to endometrial/placental-type cytochrome P450 aromatase genes in the pig and horse.** *Biol Reprod* 1997, **56**:688-696.
- Choi IH, Troyer DL, Cornwell DL, Kirby-Dobbels KR, Collante WR, Simmen FA: **Closely related genes encode developmental and tissue isoforms of porcine cytochrome P450 aromatase.** *DNA Cell Biol* 1997, **16**:769-777.
- Graddy LG, Kowalski AA, Simmen FA, Davis SLF, Baumgartner WW, Simmen RCM: **Multiple isoforms of porcine aromatase are encoded by three distinct genes.** *J Steroid Biochem* 2000, **73**:49-57.
- Corbin CJ, Mapes SM, Marcos J, Shackleton CH, Morrow D, Safe S, Wise T, Ford JJ, Conley AJ: **Paralogues of porcine aromatase cytochrome p450: a novel hydroxylase activity is associated with the survival of a duplicated gene.** *Endocrinology* 2004, **145**:2157-2164.

24. Benner SA: **Interpretive proteomics. Finding biological meaning in genome and proteome databases.** *Adv Enzyme Regul* 2003, **43**:271-359.
25. Kumar S, Hedges SB: **A molecular timescale for vertebrate evolution.** *Nature* 1998, **392**:917-920.
26. Arnason U, Gullberg A, Janke A: **Molecular timing of primate divergences as estimated by two non-primate calibration points.** *J Mol Evol* 1998, **47**:718-727.
27. Foote M, Hunter JP, Janis CM, Sepkoski JJ Jr: **Evolutionary and preservational constraints on origins of biologic groups. Divergence times of eutherian mammals.** *Science* 1999, **283**:1310-1314.
28. Carroll RL: *Vertebrate Paleontology and Evolution* New York City: WH Freeman & Co; 1988.
29. Aris-Brosou S, Yang Z: **Bayesian models of episodic evolution support a late pre-cambrian explosive diversification of the Metazoa.** *Mol Biol Evol* 2003, **20**:1947-1954.
30. Pollock DD: **Increased accuracy in analytical molecular distance estimation.** *Theor Popul Biol* 1998, **54**:78-90.
31. Peltier MR, Raley LC, Liberles DA, Benner SA, Hansen PJ: **Evolutionary history of the uterine serpins.** *J Exp Zool* 2000, **288**:165-74.
32. Graddy LG: **Porcine aromatase isoforms are encoded by three distinct genes that have undergone positive selection.** PhD thesis University of Florida, Gainesville, Animal Sciences Department; 1999.
33. Cooke HBS, Wilkinson AF: **Suidae and Tayassuidae.** In *Evolution of African Mammals* Edited by: Maglio VJ, Cooke HBS. Cambridge: Harvard University Press; 1978:438-482.
34. Fortelius M, van der Made J, Bernor RL: **Middle and Late Miocene Suoidea of Central Europe and the Eastern Mediterranean. Evolution, biogeography and paleoecology.** In *The Evolution of Western Eurasian Neogene Mammal Faunas* Edited by: Bernor RL, Fahlbusch V, Mittmann HW. New York City: Columbia University Press; 1996:348-377.
35. Rose KD: **On the origin of the order Artiodactyla.** *Proc Nat Acad Sci USA* 1996, **93**:1705-1709.
36. Franzen JL: **Fossiler Paarhufer mit Embryo.** *Natur und Museum* 1997, **127**:61-62.
37. O'Harra CC: **A fossil mammal with unborn twins.** *Science* 1930, **71**:341.
38. Li WH, Wu CI, Luo CC: **A new method for estimating synonymous and non-synonymous rates of nucleotide substitution considering the relative likelihood of nucleotide and codon changes.** *Mol Biol Evol* 1985, **2**:150-174.
39. Messier W, Stewart CB: **Episodic adaptive evolution of primate lysozymes.** *Nature* 1997, **385**:151-154.
40. Benner SA, Chamberlin SG, Liberles DA, Govindarajan S, Knecht L: **Functional inferences from reconstructed evolutionary biology involving rectified databases—an evolutionarily grounded approach to functional genomics.** *Res Microbiol* 2000, **151**:97-106.
41. Yang ZH, Bielawski JP: **Statistical methods for detecting molecular adaptation.** *Trends Ecol Evol* 2000, **15**:496-503.
42. Liberles DA, Schreiber DR, Govindarajan S, Chamberlin SG, Benner SA: **The adaptive evolution database (TAED).** *Genome Biol* 2001, **2**:RESEARCH0028.
43. Gaucher EA, Miyamoto MM, Benner SA: **Evolutionary, structural and biochemical evidence for a new interaction site of the leptin obesity protein.** *Genetics* 2003, **163**:1549-1553.
44. Nei M, Kumar S: *Molecular Evolution and Phylogenetics* New York: Oxford University Press; 2000.
45. Williams PA, Cosme J, Sridhar V, Johnson EF, McRee DE: **Mammalian microsomal cytochrome P450 monooxygenase: structural adaptations for membrane binding and functional diversity.** *Mol Cell* 2000, **5**:121-131.
46. Lehnerer M, Schulze J, Achterhold K, Lewis DFV, Hlavica P: **Identification of key residues in rabbit liver microsomal cytochrome P450 2B4: Importance in interactions with NADPH-cytochrome P450 reductase.** *J Biochem* 2000, **127**:163-169.
47. Bridges A, Gruenke L, Chang YT, Vakser IA, Loew G, Waskell L: **Identification of the binding site on cytochrome P450 2B4 for cytochrome b5 and cytochrome P450 reductase.** *J Biol Chem* 1998, **273**:17036-17049.
48. Kao YC, Higashiyama T, Sun X, Okubo T, Yarborough C, Choi I, Osawa Y, Simmen FA, Chen S: **Catalytic differences between porcine blastocyst and placental aromatase isozymes.** *Eur J Biochem* 2000, **267**:6134-6139.
49. Conley A, Mapes S, Corbin CJ, Greger D, Walters K, Trant J, Graham S: **A comparative approach to structure-function studies of mammalian aromatases.** *J Steroid Biochem* 2001, **79**:289-297.
50. Corbin CJ, Trant JM, Walters KW, Conley AJ: **Changes in testosterone metabolism associated with the evolution of placental and gonadal isozymes of porcine aromatase cytochrome P450.** *Endocrinology* 1999, **140**:5202-5210.
51. Corbin CJ, Trant JM, Conley AJ: **Porcine gonadal and placental isozymes of aromatase cytochrome P450: sub-cellular distribution and support by NADPH-cytochrome P450 reductase.** *Mol Cell Endocrinol* 2001, **172**:115-124.
52. Pope WF, Maurer RR, Stormshak F: **Intrauterine migration of the porcine embryo. Influence of estradiol-17 beta and histamine.** *Biol Reprod* 1982, **27**:575-579.
53. Bazer FW, Geisert RD, Thatcher WW, Roberts RM: **The establishment and maintenance of pregnancy.** In *Control of Reproduction in Pig* Edited by: Cole DIA, Foxcroft GR. London: Butterworth Company; 1982:227-252.
54. Geisert RD, Yelich JV: **Regulation of conceptus development and attachment in pigs.** *J Reproduct Fertil Suppl* 1997, **52**:133-149.
55. Vallet JL, Christenson RK, Trout WE, Klemcke HG: **Conceptus, progesterone, and breed effects on uterine protein secretion in swine.** *J Animal Sci* 1998, **76**:2657-2670.
56. Wilson ME: **Role of placental function in mediating conceptus growth and survival.** *J Animal Sci* 2002, **80**(E Suppl 2):.
57. Gaucher EA, Gu X, Miyamoto MM, Benner SA: **Predicting functional divergence in protein evolution by site-specific rate shifts.** *Trends Biochem Sci* 2002, **27**:315-321.
58. Stewart CB, Schilling JW, Wilson AC: **Adaptive evolution in the stomach lysozymes of foregut fermenters.** *Nature* 1987, **330**:401-404.
59. Zhang J, Kumar S: **Detection of convergent and parallel evolution at the amino acid sequence level.** *Mol Biol Evol* 1997, **14**:527-536.
60. van der Meulen J, te Kronnie G, van Deursen R, Geelen J: **Aromatase activity in individual day-11 pig blastocysts.** *J Reprod Fertil* 1989, **87**:783-788.
61. Garrett VM, Hoover DJ, Shackleton CH, Anderson LD: **Androgen metabolism by porcine granulosa cells during the process of luteinization in vitro: identification of 19-oic-androstenedione as a major metabolite and possible precursor for the formation of C18 neutral steroids.** *Endocrinology* 1991, **129**:2941-2950.
62. Hofig A, Simmen FA, Bazer FW, Simmen RC: **Effects of insulin-like growth factor-I on aromatase cytochrome P450 activity and oestradiol biosynthesis in preimplantation porcine conceptuses in vitro.** *J Endocrinol* 1991, **130**:245-250.
63. Cardenas H, Herrick JR, Pope WF: **Increased ovulation rate in gilts treated with dihydrotestosterone.** *Reproduction* 2002, **123**:527-533.
64. Rothschild M, Jacobson C, Vaske D, Tuggle C, Wang L, Short T, Eckardt G, Sasaki S, Vincent A, McLaren D, Southwood O, van der Steen H, Mileham A, Plastow G: **The estrogen receptor locus is associated with a major gene influencing litter size in pigs.** *Proc Natl Acad Sci U S A* 1996, **93**:201-205.
65. Janis CM: **Ungulate teeth, diets, and climatic changes at the Eocene/Oligocene boundary.** *Zoo-Anal Complex Sy* 1997, **100**:203-220.
66. Eisenberg JF: *The Mammalian Radiations. An Analysis of Trends in Evolution, Adaptation, and Behavior* Chicago: University of Chicago Press; 1981.
67. Pickford M: **Old World suoid systematics, phylogeny, biogeography, and biostratigraphy.** *Paleontologia Evoluc* 1993, **26**:237-269.
68. Schmidt CR: **Pigs.** In *Grzimek's Encyclopedia of Mammals* Edited by: Parker SP. New York: McGraw Hill; 1989:20-47.
69. MacLaughlin K, Ostro LET, Koontz C, Koontz F: **The ontogeny of nursing in *Babyrousa babyrousa* and a comparison with domestic pigs.** *Zoo Biol* 2000, **19**:253-262.
70. Patry M: *Babiroussa: une vie jusqu'au bout du rêve: récit* Paris: Fixot; 1990.
71. Thomsen PD, Hoyheim B, Christensen K: **Recent fusion events during evolution of pig chromosomes 3 and 6 identified by comparison with the babirusa karyotype.** *Cytogenet Cell Genet* 1996, **73**:203-208.

72. Bosma AA: **The karyotype of the babirusa (*Babyrusa babyrussa*): Karyotype evolution in the Suidae.** *Proc 4th Eur C Cyto Dom An* 1980:238-241.
73. Gaucher EA, Thomson JM, Burgan MF, Benner SA: **Inferring the palaeoenvironment of ancient bacteria on the basis of resurrected proteins.** *Nature* 2003, **425**:285-288.
74. Buck CD: In *A Dictionary of Selected Synonyms in the Principal European Languages* Chicago: University of Chicago Press; 1949:160.
75. Kim JG, Vallet JL, Christenson RK: **Molecular cloning and endometrial expression of porcine amphiregulin.** *Mol Reprod* 2003, **65**:366-372.
76. Gonnet GH, Benner SA: **Computational Biochemistry Research at ETH.** *Technical Report 154, Departement Informatik.* Zurich 1991.
77. Fitch W: **Towards defining the course of evolution. Minimum change for a specific tree topology.** *Syst Zoology* 1971, **20**:406-416.
78. Jukes TH, Cantor CR: **Evolution of protein molecules.** In *Mammalian Protein Metabolism* Edited by: Munro HN. New York: Academic Press; 1969:21-123.
79. Swofford DL: *PAUP 4.0 – Phylogenetic Analysis Using Parsimony (and Other Methods)* Sunderland: Sinauer Associates; 1998.
80. Murphy WJ, Eizirik E, O'Brien SJ, Madsen O, Scally M, Douady CJ, Teeling E, Ryder OA, Stanhope MJ, De Jong WW, Springer MS: **Resolution of the early placental mammal radiation using Bayesian phylogenetics.** *Science* 2001, **294**:2348-2351.
81. **Codon Usage Database** [<http://www.kazusa.or.jp/codon/>]
82. Yang Z: **PAML: a program for package for phylogenetic analysis by maximum likelihood.** *Comput Appl Biosci* 1997, **15**:555-556.
83. Graham-Lorence S, Amarneh B, White RE, Peterson JA, Simpson ER: **A three-dimensional model of aromatase cytochrome P450.** *Protein Sci* 1995, **4**:1065-1080.
84. Lewis DF, Lee-Robichaud P: **Molecular modelling of steroidogenic cytochromes P450 from families CYP11, CYP17, CYP19 and CYP21 based on the CYP102 crystal structure.** *J Steroid Biochem Mol Biol* 1998, **66**:217-233.
85. Janis CM, Effinger JE, Harrison JA, Honey JG, Kron DG, Lander B, Manning E, Prothero DR, Stevens MS, Stucky RK, Webb SD, Wright DB: **Artiodactyla.** In *Evolution of Tertiary Mammals of North America* Edited by: Janis CM, Scott KM, Jacobs LL. Cambridge: Cambridge University Press; 1998:337-357.
86. Gatesy J, Milinkovitch M, Waddell V, Stanhope M: **Stability of cladistic relationships between Cetacea and higher-level artiodactyl taxa.** *Syst Biol* 1999, **48**:6-20.
87. Nikaido A, Rooney P, Okada N: **Phylogenetic relationships among cetartiodactyls based on insertion of short and long interspersed elements: Hippopotomuses are the closest extant relatives of whales.** *Proc Natl Acad Sci USA* 1999, **96**:10261-10266.
88. Pickford M: **A revision of the Miocene Suidae and Tayassuidae (Artiodactyla, Mammalia) of Africa.** *Ter Res Spec Pap* 1986, **7**:1-83.
89. Randi E, Lucchini V, Diong CH: **Evolutionary genetics of the Suiformes as reconstructed using mtDNA sequencing.** *J Mammal Evol* 1996, **3**:163-194.

Publish with **BioMed Central** and every scientist can read your work free of charge

"BioMed Central will be the most significant development for disseminating the results of biomedical research in our lifetime."

Sir Paul Nurse, Cancer Research UK

Your research papers will be:

- available free of charge to the entire biomedical community
- peer reviewed and published immediately upon acceptance
- cited in PubMed and archived on PubMed Central
- yours — you keep the copyright

Submit your manuscript here:
http://www.biomedcentral.com/info/publishing_adv.asp

